

traffic lights

DEBRIEF ACTIVITY

EQUIPMENT

SYMBOL FOR TRAFFIC LIGHTS

INSTRUCTIONS

NEGATIVE BEHAVIOUR FROM SOME STUDENTS CAN SOMETIMES RESULT IN THE NECESSITY OF MORE SERIOUS CONVERSATIONS TO ADDRESS IT. THE THREE COLOURS ON TRAFFIC LIGHTS CAN BE USED AS METAPHORS FOR BEHAVIOURS: WHAT ARE YOU DOING WELL? (GREEN LIGHT) WHAT DO YOU NEED TO BE CAREFUL OF? (YELLOW LIGHT) WHAT DO YOU NEED TO STOP DOING? (RED LIGHT). WHEN STUDENTS BEGIN TO SHOW NEGATIVE BEHAVIOUR PATTERNS OR IF THERE ARE CONFLICTS, USE THE METAPHOR OF TRAFFIC LIGHTS TO DEBRIEF THE SITUATION.

SOME EXAMPLES OF PROCESSING QUESTIONS AND INFORMATION THAT RELATE TO TRAFFIC LIGHTS ARE:

RED

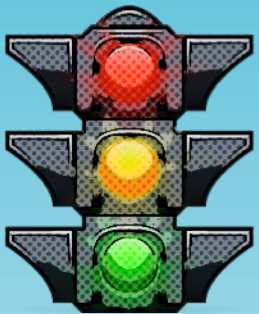
WHAT ARE THINGS HAPPENING IN OUR CLASS THAT NEED TO STOP SO WE CAN BE MORE SUCCESSFUL? (E.G. TEASING, HORSEPLAY, PUT-DOWNS, BLAMING, ETC.)

ORANGE

WHAT ARE THINGS THAT WE AS A CLASS NEED TO BE CAREFUL OF AS WE CONTINUE? (E.G. KEEPING STUDENTS SAFE, LISTENING TO ALL IDEAS, BEING AWARE OF PERSONAL CHOICES AND BOUNDARIES, ETC.)

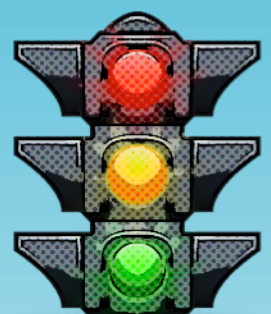
GREEN

WHAT ARE THINGS THAT WE AS A CLASS WANT TO GO FOR? THIS CAN INCLUDE GROUP GOALS, AS WELL AS BEHAVIOUR SUGGESTIONS. EXAMPLES COULD BE SHOWING RESPECT, GREATER ENCOURAGEMENT AND SETTING TIME LIMITS.

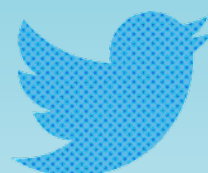


TEACHER TIP

IF PRACTICAL, ONE STUDENT CAN MONITOR THESE IDEAS FOR THE CLASS, REPORTING ON WHAT THEY OBSERVE AT THE END OF LESSONS. IF NECESSARY, HE COULD THEN CALL A CLASS DISCUSSION.



BreakAppz



@DALESIDEBOTTOM