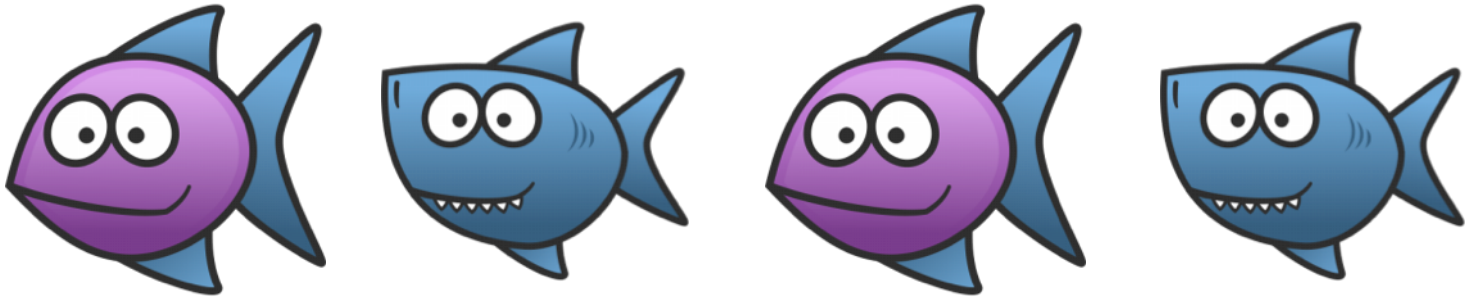


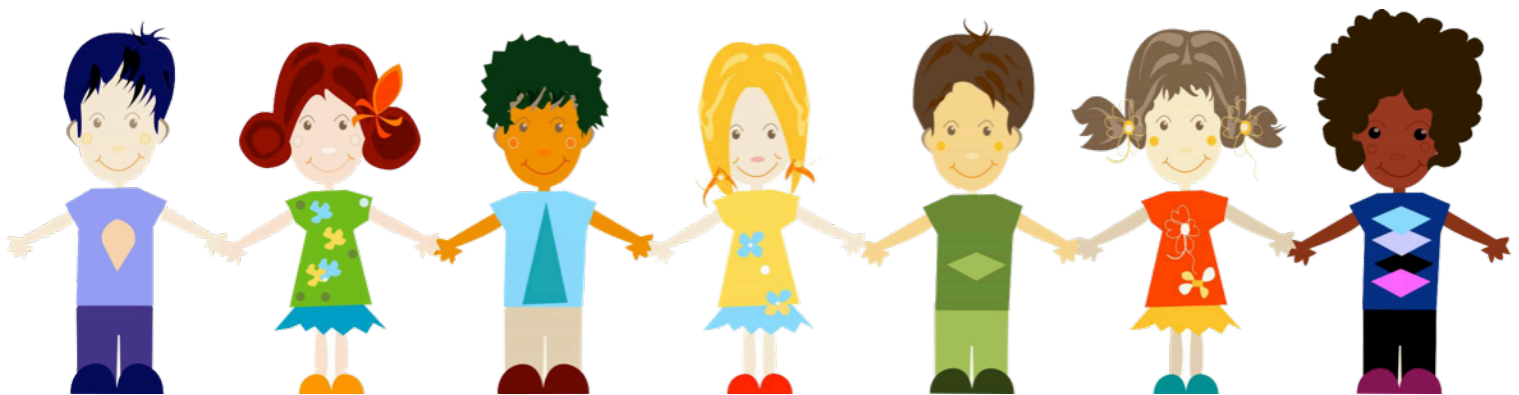
# FISHY

## ICEBREAKER ACTIVITY



## INSTRUCTIONS

STUDENTS BEGIN THIS FUN, ENERGETIC GAME BY FORMING A CIRCLE. WHEN IT IS A STUDENT'S TURN, THEY EITHER SAY "BIG FISH" AND HOLD BOTH HANDS IN FRONT OF THEM, ABOUT 10 CM APART - IT IS THEN THE NEXT STUDENT'S TURN - OR THEY SAY "SMALL FISH" AND HOLD BOTH HANDS IN FRONT OF THEM, ABOUT 50 CM APART. WHEN THIS IS DONE, THE DIRECTION CHANGES. WHEN A STUDENT MISSES (E.G. THEY SAY "SMALL FISH" AND KEEP THEIR HANDS TOO CLOSE TOGETHER OR SAY "BIG FISH" AND MOVE THEIR HANDS TOO WIDE) THEY DO A FORFEIT OR DIE WITH A LOUD NOISE.



BreakAppz



@DALESIDEBOTTOM