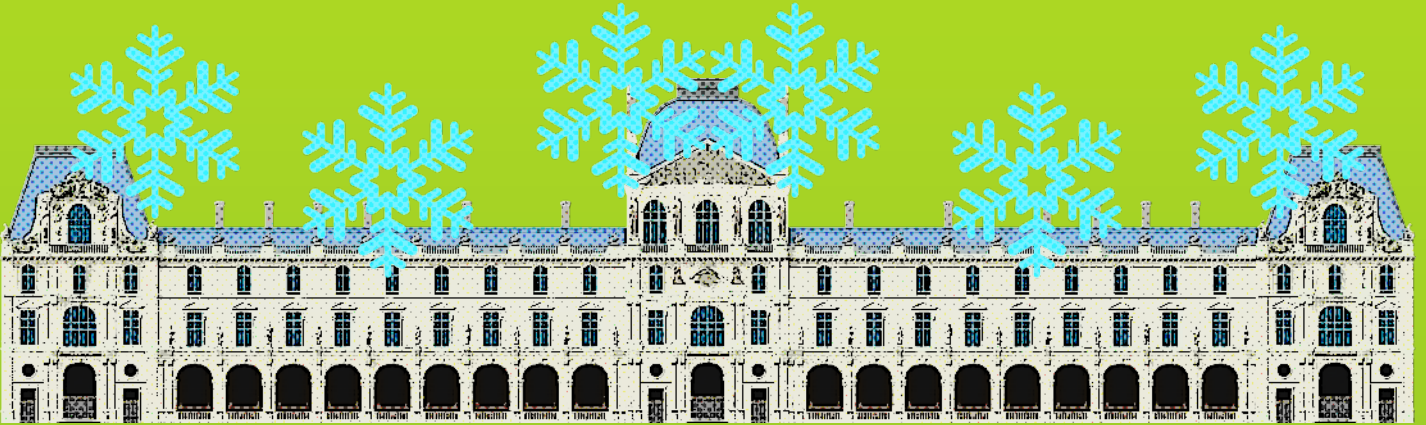


FROZEN MUSEUM

ICEBREAKER ACTIVITY



INSTRUCTIONS

ALL STUDENTS PRETEND THEY ARE STATUES AT A MUSEUM AND FREEZE IN ANY POSITION THEY'D LIKE. ONE STUDENT IS THE MUSEUM GUARD. THE GUARD WALKS AROUND THE ROOM AND TRIES TO FIND PEOPLE WHO ARE MOVING, AND IF THEY DO, THEY ARE OUT AND HAVE TO GO TO THEIR SEATS. THE STUDENTS CAN ONLY MOVE WHEN THE GUARD IS NOT LOOKING. THE STUDENTS CAN'T TALK OR LAUGH OR THEY WILL BE OUT. STUDENTS CAN BE SILLY AND MAKE FACES BEHIND THE GUARD, BUT THEN TRY TO FREEZE REALLY QUICKLY WHEN THE GUARD TURNS AROUND.



BreakAppz



@DALESIDEBOTTOM