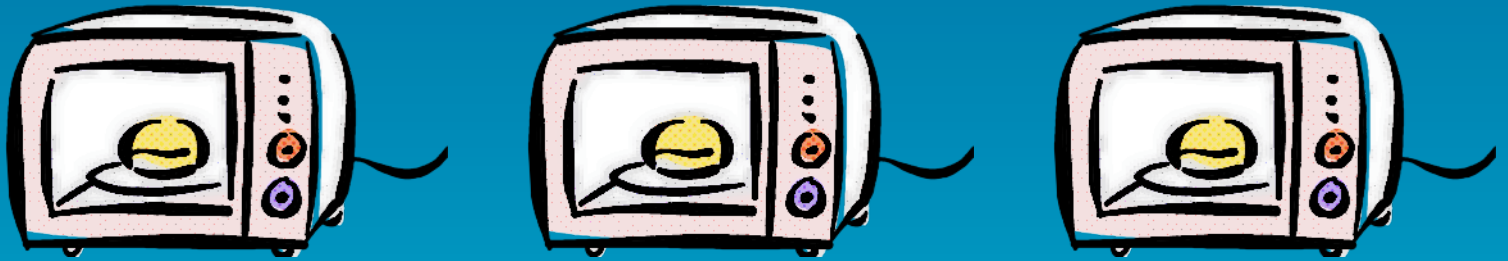


Microwave Tag

TAG ACTIVITY



EQUIPMENT

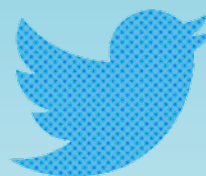
COLOUR BANDS FOR TAGGERS AND CONES TO MARK PLAYING AREA.

INSTRUCTIONS

THE GAME STARTS WITH THE TEACHER PICKING TWO STUDENTS TO BE TAGGERS. BOTH TAGGERS WILL BE GIVEN A COLOUR BAND EACH. WHEN THE GAME STARTS, IF ONE OF THE TWO TAGGERS TAG ANOTHER STUDENT, THAT STUDENT MUST BEGIN TO 'MELT DOWN LIKE A CANDLE IN A MICROWAVE' BY LOWERING THEMSELVES TO THE GROUND SLOWLY. IF ANOTHER STUDENT TOUCHES THE STUDENT MELTING BEFORE THEY REACH THE GROUND THEY ARE FREE TO RUN AROUND AGAIN. IF THEY MELT ALL THE WAY TO THE GROUND THEN THEY BECOME ANOTHER TAGGER AND PUT ON A COLOUR BAND. PLAY CONTINUES UNTIL ONLY ONE STUDENT IS LEFT, WHO IS THE WINNER. THE 'MELTING DOWN IN A MICROWAVE' SHOULD LAST ABOUT FIVE SECONDS. IF YOU ARE PLAYING WITH YOUNGER STUDENTS YOU CAN MAKE THE MELTING-DOWN TIME LONGER SO THEY HAVE MORE TIME.



BreakAppz



@DALESIDEBOTTOM